

1 Match list: I with list: II.

List-I: Name of the Wildlife Sanctuary	List-II: Division
A Arabithittu	I Kollegala
B Cauvery	II Koppal
C Kappathagudda	III Mysuru
D Bankapur	IV Gadag
	V Madikeri

Choose the correct answer from the options given below:

- (1) A-III, B-V, C-I, D-IV ✓
- (2) A-II, B-III, C-IV, D-I
- (3) A-III, B-I, C-IV, D-II
- (4) A-I, B-V, C-III, D-II ✓

2 Which of the following statement/s is/are correct regarding the Beaches and Islands in Karnataka?

- A. Maravante Beach is an example for Straight beach without-headlands.
- ~~B.~~ Om Beach is a good example for Crescent type.
- ~~C.~~ Netrani Island is the largest Island of Karnataka.
- D. St. Mary's Island is also known as Pigeon Island.

Choose the correct answer from the options given below:

- (1) Only 3 statements are correct.
- (2) Only 2 statements are correct.
- (3) Only 1 statement is correct.
- (4) All statements are correct.

3

Which of the following statement/s is/are correct regarding the Geographical location of Karnataka?

- A. It is located in the western part of the Deccan plateau. ✓
- B. 7 states are surrounding it. × 6
- C. It is flanked by the Arabian Sea in the East. ✓
- D. It comprises of Mysore Plateau and Maharashtra Plateau. ✓

Choose the correct answer from the options given below:

- (1) Statement A and C are correct.
- (2) Statement A, B and C are correct.
- (3) Statement B and D are correct. ×
- (4) Statement A and D are correct. ✓

4

Which of the following statement/s is/are incorrect regarding the Coastal plain of Karnataka?

- A. It is a part of the west coastal plain.
- B. It extends from Karwar to Mangaluru.
- C. Its maximum width being near Udupi.
- D. Another name for it is the Canara Coastal Plain.

Choose the correct answer from the options given below:

- (1) Statement A and C are incorrect.
- (2) Statement A, B and C are incorrect.
- (3) Statement B and C are incorrect.
- ~~(4)~~ Statement A and D are incorrect.

5 Which of the following statement/s is/ are correct regarding the Relief features of Karnataka?

- A. Elevations ranging from 300 to 1350 meters from the mean sea level account for nearly 92% of the state's total Geographical area. ✓
B. Northern part of the state includes Andhra plateau.
C. The 'highest peak of the state is Kudremukh. ✓
D. The coastal plain is the lowest land form in the state. ✓

Choose the correct answer from the options given below:

- (1) Only 3 statements are correct.
(2) Only 2 statements are correct. ✓
(3) Only 1 statement is correct.
(4) All statements are correct.

6 Which of the following Spot has been declared as a "National Geographical Monument"?

- (1) St. Mary's Island ✓
(2) Pigeon Island ✓
(3) Hig Island
(4) Malpe Island ✓

7 Which of the following statement/s is/are correct regarding the St. Mary's Island of Karnataka?

- A. It is located in the Northern sections of Coastal region of Karnataka.
B. It is a group of Islands.
C. It is also known as Coconut Island.
D. It is located in Dakshina Kannada district of Karnataka.

Choose the correct answer from the options given below:

- (1) Only 3 statements are correct.
(2) Only 2 statements are correct. ✓
(3) Only 1 statement is correct.
(4) All statements are correct.

8 Match list: I with list: II.

List-I:

List-II:

Name of the Estuaries

Taluk with Estuaries

- | | |
|----------------|--------------|
| A. Kali | I. Ankola |
| B. Gangavali | II. Honnavar |
| C. Aghanashini | III. Kumta |
| D. Sharavathi | IV. Bhatkal |
| | V. Karwar |

Choose the correct answer from the options given below:

- (1) A-III, B-V, C-I, D-IV
(2) A-II, B-III, C-IV, D-I
(3) A-III, B-I, C-IV, D-V
(4) A-V, B-I, C-III, D-II ✓

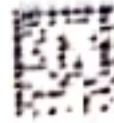
9 Money bill can be introduced in the state legislature only on the recommendation of _____.

- (1) Governor ✓
(2) Chief Minister
(3) Finance Minister
(4) Deputy Speaker

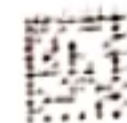
10 Local Self Government can be an example for _____.

- (1) Federalism ✓
(2) Democratic Decentralization ✓
(3) Administrative delegation ✓
(4) Direct Democracy ✓

4174490



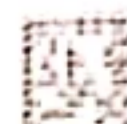
4174490



4174490



4174490



11 Which one of the following is correct about financial bills of the state legislature ?

- (1) It can be introduced only in the legislative assembly and not in the legislative council.
- (2) It can be introduced only by a private member. ✗
- (3) The legislative assembly reject all or any of the recommendations of the legislative council. ✓
- (4) If the legislative assembly reject any recommendation of the money bill is then deemed to have been passed by one of the House in the modified form.

12 Which of the following statement is not true about the Governor of the State ?

- (1) All the executive powers are vested with him.
- (2) He must have attained 35 years of age.
- (3) He holds office during pleasures of the President. ✗
- (4) The grounds for his removal are laid down in the Constitution.

13 In relation to power of the Chief Minister which statement of below is not correct ?

- (1) He is head of the Government.
- (2) Council of ministers headed by Chief Minister.
- (3) The Governor of State appoints council of Ministers on recommendation of Chief Minister.
- (4) The Chief Minister has no power in allocation of ministry.

14

Which of the following pairs are not correctly matched?

- i. Montreal protocol → Carbon emission
- ii. Kyoto protocol → Greenhouse gases
- iii. Earth convention → Rio de Janeiro
- iv. Basel convention → Hazardous waste disposal

Choose the correct option:

- (1) i only
- (2) i and iii
- (3) i and iv
- (4) iii and iv

15 Match List I with List II and select the correct answer by using the codes given below :

List I

Administrative Divisions

- A. Belagavi
- B. Bengaluru
- C. Kalaburagi
- D. Mysuru

List II

District

1. Chikkamagaluru
2. Ballari
3. Vijayapura
4. Shivamogga

(1) A-2, B-1, C-3, D-4

(2) A-1, B-2, C-3, D-4

(3) A-3, B-4, C-2, D-1

(4) A-3, B-1, C-2, D-4

16 Which of the following constitutional amendment provides for the appointment of the same person as Governor for two or more states ?

- (1) 4th Amendment
- (2) 7th Amendment ✓
- (3) 11th Amendment
- (4) 24th Amendment ✓

17 Match List I with List II and select the correct answer by using the codes given below the lists :

List I (States)	List II (Governor's Special Responsibilities)
A. Assam	1. Social and Economic advancement of different sections.
B. Manipur	2. Law and order in the State.
C. Nagaland	3. Administration of Hill areas of the State.
D. Karnataka	4. Establishment of a separate development Board for Hyderabad-Karnataka region.
	5. Administration of Tribal areas.

- (1) A-3, B-1, C-4, D-5
~~(2) A-5, B-3, C-2, D-4~~
 (3) A-1, B-2, C-4, D-3
 (4) A-3, B-4, C-5, D-2

18 Which of the following handles the disaster management in a district?

- (1) Revenue Department
 (2) Police Department
 (3) District Administration
 (4) Disaster Management Department

19 Match the following programmes

- A National Horticulture Mission
 B Rashtriya Krishivikas Yojana
 C Mahila Kisan Sashaktikaran Pariyojana
 D Devaraj Urs Housing Scheme

- (1) A-2005, B-2009, C-2014, D-2007
 (2) A-2007, B-2009, C-2005, D-2014
 (3) A-2005, B-2007, C-2009, D-2014
 (4) A-2009, B-2007, C-2014, D-2005

20 **Statement :** Karnataka Gram Panchayats are working for the eradication of poverty.

Assertion : Gram Panchayats are working in the area of education, health, sanitation, housing, social protection, employment and land productivity.

- (1) Both statement and assertion are true, assertion is the correct explanation of the statement.
 (2) Statement is true, but assertion is not the correct explanation of the statement.
 (3) Statement is true, but assertion is false.
 (4) Both statement and assertion are false.

4174490

21 Which of the following are principles of Co-operation ?

- Equal Distribution of Profits.
- Limited Interest on Capital.
- Co-operative Education.
- Co-operation Among Co-operatives.

- a and c Only
- a only
- a, b, c and d
- c and d only

22 Which of the following are Achievements of Co-operative Movement ?

- Supply of Agricultural Credit at Low Rate of Interest.
- Processing of Agricultural Produce.
- Supply of Essential Commodities at Lesser Price.
- Supply of Agricultural Inputs.

- b only
- a, b, c and d
- b, c and d only
- c only

23 Raitha Shakti Yojana in Karnataka is related to -

- Diesel subsidy for farmer
- Free transportation of agriculture product
- Agriculture machinery
- Free electricity for agriculture

24 Read the following statement given below and choose the correct alternative:
Statement 1 : The urban and rural livelihoods of Karnataka has been amalgamated as per the pronouncement made in 2020 by the state government.
Statement 2 : Sanjeevini - KSRLPS has covered the 224 blocks in all the 31 districts in the state of Karnataka.

- Both are incorrect
- Statement 1 is correct and statement 2 is incorrect
- Statement 1 is incorrect and statement 2 is correct
- Both are correct

25 During 2021-22 the Growth rate of Agriculture Sector in Karnataka state

- | | |
|-----------|-----------|
| (1) 6.7 % | (2) 7.6 % |
| (3) 8.7 % | (4) 7.8 % |

26 In Cooperative sector working capital means :

- The sum of paid up share capital
- Reserve Fund
- All types of deposits
- All of the above

27 The Cooperative General meeting notice may be sent in the following modes :

- By Registered Post
- By Email
- (1) only
- (1) and (2)

28 Which of the following pair is correctly matching ?

- Rice Tech Park - Karatagi
- Tur Tech Park - Kalaburagi
- Maize Tech Park - Mysore
- Coconut Tech Park - Tiptur

29 How many crops are in the minimum support price? (Agricultural crop Horticultural crops)

- | | |
|--------|--------|
| (1) 20 | (2) 24 |
| (3) 22 | (4) 26 |

30 Which of the following is not related to population composition?

- Size of population
- Density of population
- Sex-Ratio
- Supply of labour power

31 Which Jala Nigam is the nodal agency for the Yettinahole drinking water project?

- Krishna Bhagya Jala Nigam Limited
- Vishweshwaraiah Jala Nigam Limited
- Cauvery Neeravari Nigam Limited
- Karnataka Neeravari Nigam Limited

4174490

4174490

4174490

4174490

32 Match the following :

- A Land development Banks i 1982
- B Agriculture Refinance and Development Corporation ii 1972
- C Regional Rural Banks iii 1951
- D NABARD iv 1963

- (1) A-i, B-ii, C-iii, D-iv
- (2) A-iii, B-iv, C-ii, D-i
- (3) A-iv, B-iii, C-ii, D-i
- (4) A-ii, B-i, C-iv, D-iii

- 33 (a) The 73rd Amendment gave Constitutional status to Panchayat Raj Institutions. ✓
- (b) "Ashok Mehta Committee" recommended two tier Panchayat Raj System which is not adopted by Karnataka and Andhra Pradesh States.

Which of the following statements are correct?

- (1) (a) and (b) Statements, both are correct.
- (2) (a) and (b) Statements , both are wrong.
- (3) (a) Statement is correct (b) is wrong
- (4) (a) Statement is wrong (b) is correct.

34

- (a) Panchatantra 2.0 is envisioned in as a comprehensive and holistic platform to strengthen, digitize and centralize all the key functions and operations of Grama Panchayats in Karnataka.
- (b) Finance and Accounting, Revenue collection planning, meeting management etc. are included in Panchatantra 2.0 modules.

Which of the following is correct ?

- (1) (a) and (b) both are correct
- (2) (a) and (b) both are wrong
- (3) (a) is correct, (b) is wrong
- (4) (a) is wrong , (b) is correct

35

Assertion (A) : Under the 73rd & 74th Amendments, like Centre & State Governments, Local self Governments also get 'Constitutional Status'.

Reason (R) : For the revenue collection of Local self Governments, they impose taxes, stamp duty, surcharge etc.,

Choose the correct answer from the options given below :

- (1) Both Assertion & Reason are true.
- (2) Both Assertion & Reason are false.
- (3) Assertion is true but reason is false.
- (4) Assertion is false but reason is true.

36 In which sector is there ample probability of coming across a disguised unemployment scenario?

- (1) Agricultural sector
- (2) Manufacturing industries
- (3) National defence
- (4) Small scale units

37 Karnataka State Employment of Local Candidates in private industries, factories and other establishments Bill-2024 determines which quantitative factor?

- (1) 40% of management jobs and 60% of non-management jobs
- (2) 50% of management jobs and 70% of non-management jobs
- (3) 50% of management jobs and 50% of non-management jobs
- (4) 70% of management jobs and 70% of non-management jobs

38 Implementation of 'Karnataka Raitha Samruddhi Yojane' to encourage integrated farming by consolidating various pro-farmers scheme is introduced in which year budget?

- (1) 2021-22
- (2) 2022-23
- (3) 2023-24
- (4) 2024-25

39 What is the total expenditure of Karnataka State budget 2024-25?

- (1) ₹ 2,71,383 crores
- (2) ₹ 3,71,383 crores
- (3) ₹ 4,71,383 crores
- (4) ₹ 5,71,383 crores

40 What is the new average MGNREGA daily wage set for the financial year 2024-25?

- (1) ₹ 374
- (2) ₹ 356
- (3) ₹ 349
- (4) ₹ 316

41 Panchayat Raj structure in Karnataka is as follows :

Choose the correct answer from below :

- (1) Three-tier
- (2) Four-tier
- (3) Two-tier
- (4) None of the above

42 Which one of the following committees is not concerned with Panchayat Raj institution ?

- (1) Ashok Mehta Committee
- (2) Balwant Rai Mehta Committee
- (3) P.V.N. Rao Committee
- (4) L.M. Singhvi Committee

43 Which Article of the Constitution deals with powers, authority and responsibilities of Panchayats ?

- (1) Article 243 (A)
- (2) Article 356 (A)
- (3) Article 357
- (4) Article 243 (G)

44 Dr. B.R. Ambedkar described the following as 'The Heart and Soul of the Constitution of India'. 32 marks

- (1) Amendment of the Constitution
- (2) The Supreme Court of India
- (3) Indian Parliament
- (4) Right to Constitutional Remedies

45 The Parliament of India includes _____

- (1) Rajya Sabha and Lok Sabha
- (2) Indian President, Lok Sabha and Rajya Sabha
- (3) Lok Sabha, Rajya Sabha and Judges
- (4) Lok Sabha, Governor and President

46 With reference to Indian Constitution, who is the second highest constitutional officer in the country?

- (1) The Vice President of India ✓
- (2) The Chief Justice of India
- (3) The President of India
- (4) The Governors

47 The inscription deals in great detail about the Chola Village assemblies:

- (1) Uttaramerur Inscription
- (2) XIII Rock Edicts of Ashoka ✓
- (3) Boghazkoi Inscription
- (4) Prayag Prashasti Abhilekh

48 Basaveshwar, the advocate of *Virashaiva* or *Lingayat* sect of Karnataka was born in:

- | | |
|----------|----------|
| (1) 1125 | (2) 1225 |
| (3) 1150 | (4) 1175 |

49 Raja Ram Mohan's first organization was:

- (1) Brahma Samaj ✓
- (2) Adi Brahma Samaj
- (3) Arya Samaj
- (4) Atmiya Sabha

50 Which of the following ancient ruler convened the fourth Buddhist Council in Kashmir ?

- (1) Kanishka ✓
- (2) Asoka ✗
- (3) Kharavela ✗
- (4) Chandragupt Maurya ✗

51 The Sultan who followed the Kingship theory and believed that he is the 'Shadow of God' on earth was :

- (1) Iltutmish ✗
- (2) Balban ✗
- (3) Muhammad bin Tughlaq ✓
- (4) Alauddin Khalji ✓

52 Which famous scholar define the Aryan migrated from Central Asia?

- (1) Dr. B.K. Ghosh
- (2) Sir William Jones
- (3) Max Muller
- (4) Bal Gangadhar Tilak

53 Who founded the Nanda Dynasty ?

- (1) Dhanananda ✓
- (2) Ashoka Nanda ✗
- (3) Mahapadma Nanda ✗
- (4) Kanishka ✗

54 Who among the following founded the "Tattvabodhini Sabha" ?

- (1) Raja Ram Mohan Roy
- (2) Debendranath Tagore ✓
- (3) Keshav Chandra Sen
- (4) Gopal. Krishna Gokhale

55 Which year was Kannada Sahitya Parishat established ?

- (1) 1904
- (2) 1910 ✓
- (3) 1915
- (4) 1920

56 Which place is known as ^{set on} silk city of Karnataka ?

- (1) Bengaluru ✗
- (2) Channapatna ✓
- (3) Dharwad ✗
- (4) Ramanagara ✓

57 Persian Ambassador Abdur Razzak visited the court of :

- (1) Devaraya I
- (2) Devaraya II
- (3) Krishnadevaraya
- (4) Aliya Ramaraya

58 Who is known as the father of Carnatic music ?

- (1) Kanakadasa
- (2) Naraharidasa
- (3) Purandaradasa ✓
- (4) Vittaldas

59 Which one of the following pair is correctly matched ?

- (1) Sarnath – Buddha's Birth Place ✗
- (2) Lumbini – The place where Buddha got Enlightenment ✓
- (3) Bodh Gaya – The place where Buddha taught his first sermon
- (4) Kusinagara – Buddha's death place ✓

60

What is the correct chronology of dynasties that ruled Vijayanagar ?

- (1) Sangama, Tuluva, Saluva, Aravidu
- (2) Tuluva, Sangama, Saluva, Aravidu
- (3) Aravidu, Sangama, Tuluva, Saluva
- (4) Sangama, Saluva, Tuluva, Aravidu

61

Which one of the following Shaiva cults was the earliest ?

- (1) Kapalikas
- (2) Kalamukhas
- (3) Pashupatas
- (4) Kamphatas

62

Which of the following UTM zones does the state of Karnataka cover?

- (1) 43S and 44N
- (2) 43S and 44S
- (3) 43N and 44S
- (4) 43N and 44N

63

Which of the following statement/s is/are correct regarding Savanadurga hill in Karnataka?

- A. It is a Monolith hill (rock)
- B. It is located in Bengaluru district. ✗
- C. On the top of it lies Kote Sri Nandi Gudi. ✓
- D. It is 1226m above the mean sea level.

Choose the correct answer from the options given below:

- (1) Only 3 statements are correct.
- (2) Only 2 statements are correct.
- (3) Only 1 statement is correct.
- (4) All statements are correct.

4174490

- 64 'I2U2' group comprises of :
- US ✓
 - Iraq
 - Indonesia ✓
 - UAE ✓

Select the correct answer :

- (a), (b), (c) ✓
- (a), (c), (d) ✓
- (b), (c), (d) ✓
- None of the above

- 65 Swapnil Tripathi vs Supreme Court of India 2018 case, sometimes seen in India is related to :

- Uniform Civil Code
- Validity of Aadhar
- Rights of LGBT Community ✓
- Live Streaming of Court Cases

- 66 Consider the following statements regarding United Nations Democracy Fund (UNDEF).

- The large majority of UNDEF funds go to local civil society organizations.
- UNDEF subsists entirely on voluntary contributions from Governments.
- UNDEF falls under the direct authority of the US foreign secretary.
- India is among the top ten biggest UNDEF donor countries.

Which of the above statements is/are correct ?

- (a), (b), (c) (2) (a), (c), (d)
- (a), (b), (d) (4) (a), (b), (c), (d)

- 67 Consider the following statements with respect to tax exemptions to political parties :

(a) Section 13A of the Income Tax exempts recognized political parties from paying income tax on the income they receive.

(b) Parties violating provisions of section 13A will not be able to claim tax exemption based on rules under the Representation of the People Act, 1951.

which of the above statement/s is/are correct ?

- Only (a)
- Only (b)
- Both (a) and (b)
- Neither (a) nor (b)

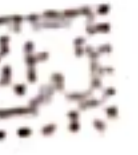
- 68 Consider the following statements

- Development of SC dominated villages into an "Adarsh Gram".
- 'Grants-in-aid' for District/State - level project for socio-economic betterment of SCs.
- Financial assistance towards loans taken by beneficiaries for acquisition/creation of assets required for livelihood generation.

Which among the following are the components of Pradhan Mantri Anusuchit Jaati Abhyuday Yojana ?

- (a) and (b)
- (a) and (c)
- (a), (b), (c)
- None of the above

4174490



4174490



4174490



4174490



69 Two straight parallel conductors carrying current in the opposite direction, then the two conductors will be :

- (1) Repulsive
- (2) Attractive ✓
- (3) Bends each other
- (4) Neither attractive nor repulsive

70 The following electric devices does not obey Ohm's law.

- (1) Semi-conductors
- (2) Diodes
- (3) Filament lamps
- (4) All the above

71 A fast wind can turn the blades of a wind mill because it possesses

- (1) Potential energy ✓
- (2) Chemical energy ✗
- (3) Kinetic energy ✓
- (4) Sound energy ✗

72 Storage form of carbohydrates in human is -

- | | |
|----------------------|--------------|
| (1) <u>Cellulose</u> | (2) Starch |
| (3) <u>Glucagon</u> | (4) Glycogen |

73 Why do we see a green image after staring at a red object for a long time?

- (1) Retinal fatigue ✗
- (2) Brain malfunction ✗
- (3) Color reflection ✓
- (4) Pupil dilation ✓

74 The method of protecting wild animals in their natural habitat -

- (1) Ex-situ conservation
- (2) In-situ conservation
- (3) Artificial conservation
- (4) Natural conservation

75 The first human case of Covid-19 was reported in -

- (1) Thiruvananthapuram
- (2) Wuhan ✓
- (3) Washington
- (4) Munich

76 Surgical removal of uterus is called -

- (1) Tubectomy ✓
- (2) Vasectomy
- (3) Hysterectomy
- (4) Mastectomy ✓

77 During hibernation, frog undergoes -

- (1) Summer sleep
- (2) Winter sleep
- (3) Autumn sleep
- (4) Spring sleep

78 Why does hot water sometimes freeze faster than cold water?

- (1) Increased convection
- (2) Lower density
- (3) Mpemba effect
- (4) Reduced heat capacity

79 A real and enlarged image can be obtained by using -

- (1) Convex mirror ○ ✓ ✓
- (2) Plane mirror □
- (3) Concave mirror ≡ ✓
- (4) Plano convex mirror

4174490

4174490

4174490

- 80 Current in the circuit flows _____
- (1) in direction from high potential to low potential.
 - (2) in direction from low potential to high potential.
 - (3) in direction of flow of electrons.
 - (4) in any direction.
- 81 The Nano scale ranges from -
- (1) 1-100 nm
 - (2) 200-300 nm
 - (3) 300-400 nm
 - (4) 600-700 nm
- 82 The centre of gravity of a uniform ball lies -
- (1) at its geometrical centre
 - (2) at its bottom
 - (3) at its top most point
 - (4) at any point on its surface
- 83 A domestic electric meter records the consumption of which of the following physical quantities -
- (1) electric charge
 - (2) electric current
 - (3) electrical energy
 - (4) electrical voltage ✓
- 84 With reference to the Constitution of India, who decides whether a bill is money bill or not ?
- (1) Speaker of the House of People
 - (2) Vice President of India
 - (3) President of India
 - (4) Chairman of Finance Commission

- 85 Which of the following is the largest committee of the Indian Parliament ?
- (1) The Estimate Committee
 - (2) The Public Accounts Committee
 - (3) Public Undertaking Committee
 - (4) None of the above
- 86 Joint Session of the Parliament presided by :
- (1) Chairman of Rajya Sabha
 - (2) President of India ✓
 - (3) Speaker of Lok Sabha
 - (4) Prime Minister
- 87 With reference to High Court the following can take part in the appointment of Judges.
- (a) President -
 - (b) Governor ✓
 - (c) Chief Justice of India ✓
 - (d) Attorney General of India
- Select the correct answer using codes given below :
- (1) (a), (c), (d)
 - (2) (a), (b), (c) ✓
 - (3) (b), (c), (d)
 - (4) (a) and (c)
- 88 Regarding the office of President of India consider the following statements :
- (a) He is not a member of either house of the Parliament
 - (b) He is an integral part of the parliament
 - (c) He is the Real Executive
 - (d) He is the Representative of Nation
- Select the correct answer using the code given below :
- (1) (a), (b) and (d)
 - (2) (a), (b), (c), (d)
 - (3) (c) and (d)
 - (4) (b), (c) and (d)

89 In which of the following year Indian Citizenship Act was passed.

- (1) 1947 (2) 1955 ✓
(3) 1964 (4) 1949

90 In the following case Supreme Court gave the judgement that the National Awards like Bharat Rathna, Padma Vibhushan, Padma Bhushan and Padmashri award given by the Government of India are not titles (under Article 18)

- (1) Balaji V/s State of Mysore ✓
(2) Randir Singh Vs Union of India
(3) Balaji Raghavan V/s Union of India
(4) Charan Lal Sahu Vs Union of India

91 Which of the following is not correct about Finance Commission ?

- (1) It is constituted every 5 years as per the provisions of the Article 280 of the Constitution
(2) The qualifications of the members of finance commission are determined by the President.
(3) It acts as balancing wheel of the Indian fiscal federation ✓
(4) The members of Finance Commission are appointed by the President of India.

92 Which of the following house is called as House of Elders ?

- (1) Rajya Sabha ✓
(2) Lok Sabha
(3) Vidhan Sabha
(4) Grama Sabha

93

With reference to the legislative power of the President of India following are true :

- (a) The opening address of the 1st session
(b) Previous sanction to Legislation
(c) Veto Power
(d) Ordinance making power
(e) Granting of Pardons ✓

Select the correct answer using the codes given below :

- (1) (a), (b), (c), (d), (e) ✓
(2) (a), (b), (c), (d)
(3) (a), (b), (c)
(4) (b), (c), (d)

94

Which of the following case is related to Article 365 of Indian Constitution ?

- (1) S.R. Bomaiah vs Union of India
(2) State of Rajasthan vs Union of India
(3) Rameshwar Prasad vs Union of India
(4) Manohar Lal vs Union of India

95

The following authority decides the question of disqualification on grounds of defection

- (1) Speaker or chairman of the House
(2) President of India or Governor of State
(3) Election Commission
(4) Ministry of Parliamentary Affairs

- 96 With reference to the Constitution of India following statements are true regarding Advocate General of a state.
- Appointed by the Governor of state.
 - He shall hold the office during the pleasure of the Governor.
 - He should be qualified to be a judge of a High Court.
 - His Remuneration will be charged on the consolidated fund of India.
 - He shall have the Right to speak & take part in the proceedings of state legislature.

Select the correct answer using the codes given below.

- (a), (b), (c) & (d)
- (a), (c), (d) & (e)
- (a), (b), (c) & (e)
- (a), (c), (d)

- 97 With reference to the Constitutional Development of India the following are true regarding the features of the Acts.
- Government of India Act 1858 - British crown assumed Sovereignty over India from the East India Company.
 - 1909 Indian Council Act - Provincial Legislative Council members were decreased.
 - Government of Council Act 1919 - Dyarchy in the Centre.
 - Government of India Act 1935 - Federation and provincial Autonomy.
 - Indian Independence Act 1947 - Sovereignty of the dominion Legislature.

Select the correct answer using the codes given below.

- (a), (b), (d) & (e)
- (b), (c), (d) and (e)
- (a), (d), (e)
- (a), (c), (d), (e)

- 98 The following are true regarding Directive principles of State policy.
- There are 16 articles dealing with Directive principles of State Policy.
 - Influenced by universal declaration of Human Rights.
 - Directive Principles like a cheque on bank payable only when the resources of the bank permits said by - K.M. Munshi.
 - Recommended by the advisory committee on Fundamental Rights for inclusion.
 - Instrument of instructions.

Select the correct answer using the codes given below.

- (b), (d) & (e)
- (a), (d) & (c)
- (a), (b), (d) & (e)
- (c), (b), (d) & (e)

- 99 With reference to the Constitution of India power of Judicial Review exercised by :

- Supreme Court only
- High Courts only
- Supreme Court and High Courts
- High Courts and Subordinate Courts

- 100 The Chief Election Commissioner of India is appointed by

- The President on the advice of the Prime Minister
- The Cabinet of ministers
- The Chief justice of the Supreme Court
- The Parliament of India