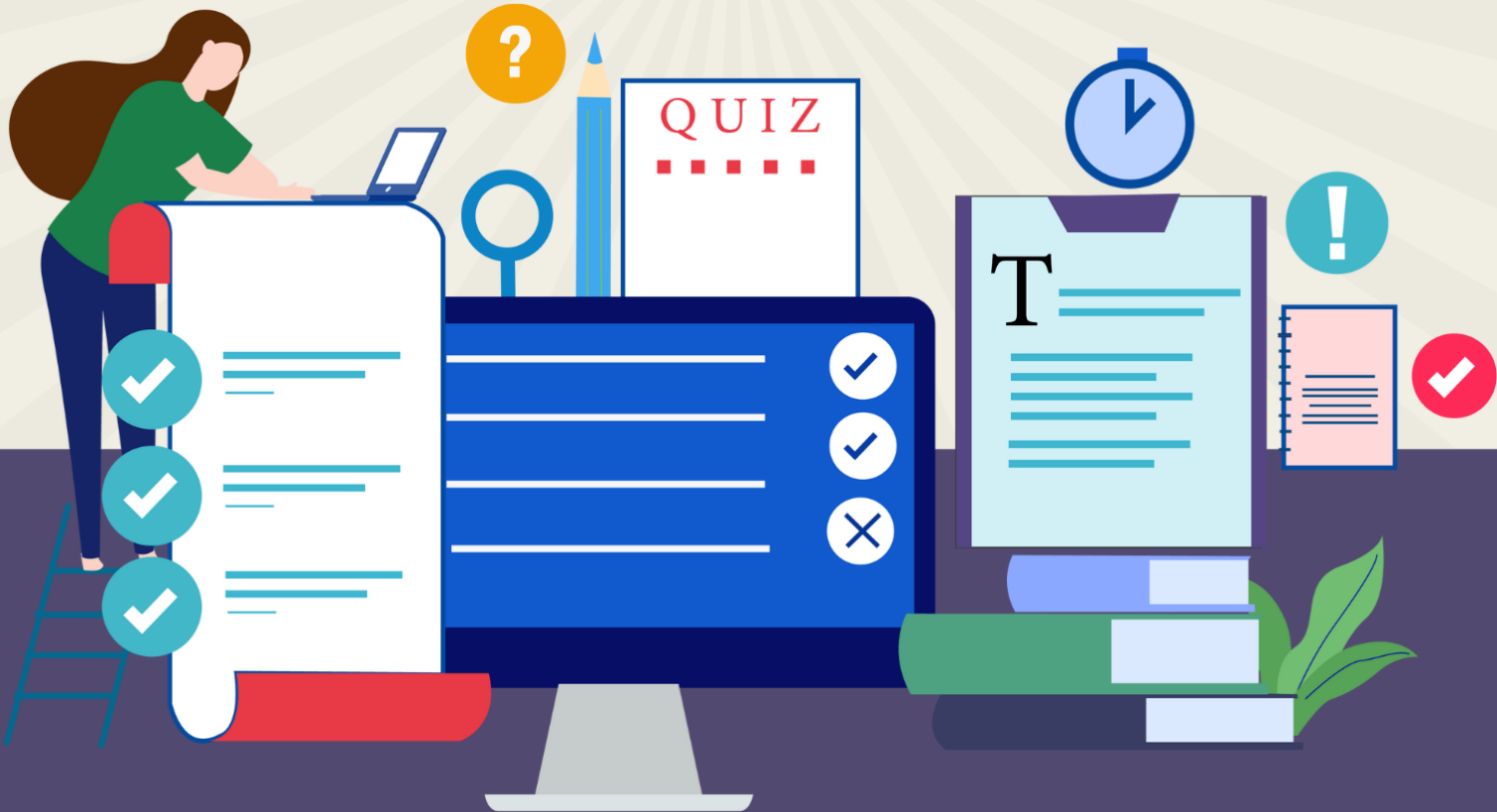


# MAHITHI MONTHLY PRACTISE MCQ DECEMBER 2024

## NAMMAKPSC ACADEMY



[www.nammaKPSC.com](http://www.nammaKPSC.com)

## ***PRACTISE MCQ***

---

1. Which of the following statements are true about the Ranebennur Blackbuck Sanctuary's eucalyptus removal plan?

The eucalyptus trees are being removed to create an open grassland habitat for the Great Indian Bustard.

The eucalyptus trees have had minimal impact on the sanctuary's grassland species.

The Forest Department has already cleared eucalyptus from nearly 400 hectares of the sanctuary.

- A) Only statement 1 is true.
- B) Only statements 1 and 3 are true.
- C) Only statement 3 is true.
- D) All three statements are true.

2. Which of the following statements are true about the Atmanirbhar Clean Plant Programme?

It aims to improve crop yields and promote climate-resilient horticulture varieties.

The program involves the construction of 15 Clean Plant Centers across India.

Women farmers are actively engaged in the program.

It is implemented by the Ministry of Agriculture and the Ministry of Health.

- A) 1 and 3 only
- B) 1 and 4 only
- C) 2 and 3 only
- D) All of the above

3. Which of the following statements about cyclone landfall is true?

A cyclone always causes a direct hit during landfall.

Cyclones weaken after landfall due to reduced moisture supply.

- A) Only 1 is true
- B) Only 2 is true
- C) Both 1 and 2 are true
- D) Neither 1 nor 2 is true

4. Where did Cyclone Fengal make landfall on November 30, 2024?

- A) Tamil Nadu
- B) Andhra Pradesh
- C) Puducherry
- D) Kerala

5. Which of the following statements are true?

1. National Pollution Control Day is observed to celebrate advancements in industrial safety.

2. The Bhopal Gas Tragedy involved a leak of methyl isocyanate gas in December 1984.

3. Air pollution is recognized as a significant global health threat.

4. The theme for National Pollution Control Day 2024 is "Clean Air, Green Earth: A Step Towards Sustainable Living."

- A) 1 and 2
- B) All of the statements
- C) 1, 3, and 4
- D) 2, 3, and 4

6. Which of the following statements are true about the PRAGATI system?

PRAGATI has fast-tracked projects worth \$205 billion in India.

The system primarily focuses on improving health services.

PRAGATI integrates technologies such as Digital Data Management, Video-Conferencing, and Geo-Spatial Technology. The PRAGATI system operates solely within the Union Government without any state involvement.

- A) 1 and 2
- B) 1 and 3
- C) 2 and 4
- D) 1 and 4

7. Which of the following statements are true about the Urban Infrastructure Development Fund (UIDF)?

The UIDF is funded through the priority sector lending shortfall to support urban infrastructure development in Tier-2 and Tier-3 cities.

The fund is managed by the Ministry of Housing and Urban Affairs.

The initial corpus of UIDF is ₹50,000 crore to enhance urban infrastructure.

The UIDF loans are repayable in five equal annual instalments within seven years.

- A) 1 and 4
- B) 1 and 3
- C) 2 and 4
- D) 1 and 2

8. Which of the following is/are true about UIDF loans?

The interest rate on UIDF loans is set at Bank Rate minus 1.5%.

States must repay the loans in 10 equal instalments over 15 years.

The interest on UIDF loans is paid quarterly.

The loans are primarily used for Sewerage and Solid Waste Management.

- A) 1 and 3
- B) 1 and 4
- C) 2 and 3
- D) 3 and 4

9. Who chairs the Advisory Committee on National Accounts Statistics (ACNAS)?

- A) Rao Inderjit Singh
- B) Nirmala Sitharaman
- C) Saurabh Garg
- D) Biswanath Goldar

10. Who claimed the third spot in the 2024 FIM Bajas World Cup?

- A) Aishwarya Pissay
- B) CS Santosh
- C) Ashish Raorane
- D) KP Aravind

11. Which of the following statements are true?

The PM E-DRIVE scheme was launched on September 29, 2023.

Karnataka is seeking 5,000 electric buses for Bengaluru.

BMTC currently operates over 10,000 buses.

Rs 10,900 crore has been allocated under PM E-DRIVE for electric vehicle infrastructure.

- A) 1 and 2
- B) 2 and 4
- C) 1 and 3
- D) 3 and 4

12. Which of the following statements are true regarding the Supreme Court's recent directives on the PoSH Act?

District officers must be appointed by December 31, 2025.

Local Complaints Committees (LCCs) should be formed by January 31, 2025.

The SheBox portal is meant to centralize complaints and committee details.

- A) 1 and 2
- B) 1 and 3
- C) 2 and 3
- D) All of the above

13. Which innovative features were highlighted at the 'Agriculture Future Forward: Startup Conclave' hosted by the University of Agricultural Sciences in Bengaluru?

AI-enabled beekeeping innovations  
Genome-editing technologies  
Space agriculture technologies  
Greenhouse automation systems

- A) 1 and 2
- B) 2 and 3
- C) 3 and 4
- D) 1 and 4

14. What is the main purpose of the YesToAccess app launched on the International Day of Persons with Disabilities?

To provide medical assistance to disabled individuals

To assess the accessibility of public spaces

To raise awareness about disability issues

To offer job opportunities for disabled people

A) 1 and 3

B) 2 only

C) 3 and 4

D) 1 and 2

15. Which of the following is true regarding the reclassification of packaged drinking water and mineral water by FSSAI?

They have been classified as a "Low Risk Food Category"

They will now undergo annual risk-based inspections and third-party audits

The move is aimed at reducing consumer protection

The reclassification will not affect manufacturers of bottled water

A) 1 and 3

B) 1 and 2

C) 3 and 4

D) 2 only

16. Which of the following statements about Karnataka's Circular Economy Policy is true?

20% sustainable materials are required for government construction projects.

Tax incentives for sustainable practices are limited to industrial sectors only.

The policy includes initiatives to manage waste in water bodies.

Recycled materials will be tested in collaboration with the Forest Department.

A) 1, 2, and 3

B) 1, 3, and 4

C) 2, 3, and 4

D) All of the above

17. Which of the following statements about drought challenges is true?

By 2050, 50% of the global population will face drought risks.

Human activities like urbanization exacerbate drought conditions.

India's soybean sector is immune to drought impacts.

Early warning systems can help reduce drought risks.

A) 1 and 3

B) 1, 2, and 4

C) 2 and 4

D) All of the above

18. Which of the following are key features of PROBA-3's imaging and scientific goals?

Observes the Sun's corona in visible, UV, IR, and polarized light spectrums.

Extends observations to 1.1 solar radii from the Sun.

Focuses on mapping the Earth's magnetic field.

Demonstrates advanced formation flying technology.

A) 1, 2, and 4

B) 1, 3, and 4

C) 2 and 3 only

D) All of the above

19. Which of the following is true under the Hastakala Setu Yojana?

Bharuch's 'Sujni' craft and Surat's 'Saadeli' art were recently recognized.

Ahmedabad's 'Saudagiri Print' and 'Maata Ni Pacchedi' are among the included crafts.

Gujarat's 27th GI tag under the program was awarded for 'Soof' embroidery.

The Hastakala Setu Yojana only promotes Gujarat's handicrafts.

A) 1 and 2

B) 2 and 4

C) 3 and 4

D) 1 and 3

20. Which of the following statements about tiger reserves in India is TRUE?

Tiger reserves were first established under the Wildlife (Protection) Act, 1972.

India accounts for 50% of the global tiger population.

Ratapani Wildlife Sanctuary is India's 57th tiger reserve as of December 2024.

The buffer area of a tiger reserve is exclusively forest land.

- A) 1, 2, and 3
- B) 2 and 4
- C) 3 only
- D) 1 and 3

21. Which of the following statements about Karnataka's marine exports is true?

1. Karnataka ranked second in marine exports in 2023-24.
2. Karnataka's marine exports declined to 2.735 lakh tonnes in 2023-24.
3. Karnataka leads the nation in shrimp farming area.
4. Karnataka's marine fish production increased in 2023-24.

- Only 1
- Only 2
- 1 and 4
- 2 and 3

22. Which of the following statements are true regarding the Cash Reserve Ratio (CRR) changes announced in RBI's December 2024 monetary policy?

CRR was reduced by 50 basis points to 4%. The CRR cut released ₹1.16 lakh crore liquidity into the banking system.

CRR earns interest for banks when maintained with the RBI.

The CRR cut will reduce banks' lending capacity.

- A) Only 1 and 2 are true.
- B) Only 1, 2, and 3 are true.
- C) Only 1 and 3 are true.
- D) Only 2 and 4 are true.

23. Which of the following statements about Dal Lake is true?

Dal Lake is a freshwater lake spanning 18 sq. km in Srinagar.

The Char Chinar island is known for its ancient pine trees.

Dal Lake is surrounded by the Aravalli Hills.

Floating gardens on Dal Lake are famous for flower and vegetable markets.

- Only 1 and 2
- Only 3 and 4
- Only 1 and 4
- All of the above

24. Which of the following statements about gait analysis are true?

Gait analysis helps detect locomotion abnormalities during running or walking.

It evaluates only skeletal systems without considering visual or vestibular functions.

It diagnoses bone deformities and skeletal misalignments.

Gait analysis is unrelated to monitoring disease progression.

- A) 1, 2, and 3
- B) 1 and 3 only
- C) 2 and 4 only
- D) All of the above

25. Which of the following statements about the red gram crisis in Karnataka are true?

Kalaburagi is known as the 'Toor Bowl of Karnataka.'

November rainfall was 5 mm, 70% below normal levels.

Farmers received ₹25,000 per acre as compensation.

Outdated land records hindered crop insurance claims.

- A) Only 1 and 2
- B) Only 1, 2, and 4
- C) Only 1 and 3
- D) All statements are true

26. Which of the following statements are true regarding the Bidadi Integrated Township project?

Developers will be given land parcels on a 99-year lease for layout and property development.

Land pooling is the primary method for land acquisition, with minimal reliance on outright purchases.

The first phase involves private developers managing the land pooling process. Similar land development models have been referenced from Gujarat and Tamil Nadu.

- A) 1 and 2
- B) 2 and 3
- C) 1, 2, and 4
- D) All of the above

27. Which of the Following Statements are True?

Bima Sakhi Yojana aims to empower rural women by providing training in financial literacy and employment opportunities.

Women aged 18–50 years with no minimum education are eligible to apply to Bima Sakhi Yojana.

Bima Sakhis can serve as LIC agents and may also apply for development officer roles after completing the program.

- A) Only 1 and 2
- B) Only 1 and 3
- C) Only 2 and 3
- D) All of the above

28 Which of the following statements are true?

Sanjay Malhotra is the 25th Governor of the Reserve Bank of India.

His term as Governor begins on December 11, 2024.

Malhotra has a Computer Science degree from IIT Kanpur.

Shaktikanta Das served as the 15th Governor of the RBI.

- A) 1 and 4
- B) 1, 3, and 4
- C) 2 and 3
- D) 2, 3, and 4

29. Which of the following statements are true about INS Tushil?

INS Tushil is part of the Krivak III-class frigates.

All four ships under the 2016 India-Russia deal are being built in India.

INS Tushil is designed for operations in air, surface, underwater, and electromagnetic dimensions.

COVID-19 and the Ukraine war delayed its construction timeline.

- A) All of the above
- B) 1, 2, and 3 only
- C) 2 and 4 only
- D) 1, 3, and 4 only

30. Which of the following statements are true regarding Kerala's "Operation Smile" initiative for the Koraga tribe?

The Koraga tribe is a Particularly Vulnerable Tribal Group (PVTG) residing in Kerala and Karnataka.

The primary aim of "Operation Smile" is to provide land titles (patta) to the Koraga tribe.

The Koraga tribe follows a patriarchal family system.

The initiative is specifically focused on the Kasaragod and Manjeswaram taluks in Kerala.

- A) 1, 2, and 4 only
- B) 1, 3, and 4 only
- C) 2, 3, and 4 only
- D) All of the above

31. What is the key feature of the Gripen E fighter jet?

- A) Supersonic speed only
- B) Modular software allowing quick upgrades
- C) Exclusive compatibility with Swedish-made weapons
- D) Limited networking capabilities

32. What year did UNESCO designate the Western Ghats as a World Heritage Site?

- A) 2005
- B) 2012
- C) 2018
- D) 2021

33. Which company signed an MoU with BMRCL for constructing the DRDO Sports Complex Metro Station?

- A) Prestige Group
- B) Embassy Group
- C) Sobha Limited
- D) Bagmane Developers Pvt. Ltd.

34. Which zone topped the BBMP's property tax collection in Bengaluru?

- A) Rajarajeshwari Nagar
- B) Mahadevapura
- C) Whitefield
- D) Yelahanka

35. What is the traditional fermented bamboo shoot variety from Tripura called?

- A) Melye-amiley
- B) Maroi-naa
- C) Amlo-fari
- D) Tako-pani

36. Which of the following statements about Program Vasundhara are true?

It is a five-year initiative launched by American Express.

The program involves constructing a rainwater harvesting structure in Bengaluru.

Solar solutions are part of the initiatives in Gurugram.

It focuses solely on reforestation in rural areas.

- A) 1 and 3
- B) 2 and 3
- C) 1 and 4
- D) 2 and 4

37. Which of the following statements about the PM POSHAN Scheme is true?

The PM POSHAN Scheme replaced the Mid-Day Meal Scheme in 2020.

It covers students from Classes 1 to 8 and Balvatika in government and government-aided schools.

The Centre does not provide any support for foodgrain costs.

Tithi Bhojan is a concept of providing free textbooks under the scheme.

- A) 1 and 2
- B) 2 and 4
- C) Only 2
- D) 1, 2, and 3

38. Which of the following statements are true regarding the Inflation Expectations Survey and RBI forecasts?

The median inflation perception rose to 8.4% in November 2024.

Inflation forecasts for Q4 FY2025 were revised to 5.7%.

Rising food prices and housing costs contributed to increased inflation expectations.

The RBI's revised overall inflation forecast for FY2025 is 4.8%.

- A) 1, 3, and 4
- B) 1, 2, and 4
- C) 2 and 4 only
- D) All of the above

39. Which of the following challenges in haemophilia treatment are addressed by the new gene therapy?

The need for frequent Factor VIII injections.

High treatment costs over time.

Use of adenovirus vectors requiring immune suppression.

Reduction in annual bleeding incidents.

- A) All of the above
- B) 1 and 2
- C) 1, 2, and 4
- D) 2, 3, and 4

40. Which of the following statements about the BLE Gateway System is true?

The BLE Gateway system can manage up to 100 BLE nodes simultaneously.

It offers data transmission over a range of up to 2 km in line-of-sight conditions.

The system includes features like humidity/temperature sensors and external RTC.

The BLE Gateway system relies solely on wired connectivity for data transmission.

- A) 1 and 2
- B) 1 and 3
- C) 2 and 4
- D) 3 and 4

41. Who recently received the honorary rank of 'General of Indian Army' from President Droupadi Murmu?

- A) General Upendra Dwivedi
- B) General Ashok Raj Sigdel
- C) General Bipin Rawat
- D) General Ramchandra Paudel

42. When was the tradition of conferring the title of Honorary General between India and Nepal initiated?

- A) 1947
- B) 1950
- C) 1965
- D) 1975

43. What is the name of the newly inaugurated High-Performance Centre for badminton in Odisha?

- A) Shuttle Academy
- B) Dalmia Bharat Badminton Academy
- C) Shuttle by Dalmia Bharat
- D) Gopichand High-Performance Centre

44. What is the number of Jan Aushadhi Kendras (JAKs) currently operational across India?

- A) 10,000
- B) 12,300
- C) 14,300
- D) 15,000

45. Under which ministry does the Inland Waterways Authority of India (IWAI) operate?

- A) Ministry of Tourism
- B) Ministry of Shipping, Ports, and Waterways
- C) Ministry of Environment
- D) Ministry of Road Transport

46. Which of the following statements are true about Jalvahak Scheme?

1. The Jalvahak Scheme is aimed at boosting road transportation for cargo movement.

2. The scheme offers up to a 35% reimbursement on operating expenses for cargo transport.

3. Regular cargo services are scheduled from Haldia on National Waterways 1 and 2.

- A) 1 and 2
- B) 2 and 3
- C) 1 and 3
- D) All of the above

47. Which of the following statements are true?

The IAO in Hanle, Ladakh, is the ideal site for space-based quantum communication. Mount Abu in Rajasthan is identified as the best location for quantum communication.

Quantum Key Distribution uses traditional cryptographic methods for communication.

The IAO's cold and dry environment is ideal for quantum signal transmission.

- A) 1 and 3
- B) 1 and 4
- C) 2 and 3
- D) 3 and 4

48. Which of the following statements are true about the Hyperloop project at IIT Madras?

The project is led by the Avishkar Hyperloop team at IIT Madras.

The Hyperloop technology was first introduced by IIT Madras in 2012.

The test track completed at IIT Madras is 410 meters long.

The Hyperloop technology can reach speeds of up to 1,100 km/h.

- A) 1, 3, 4
- B) 2, 3, 4
- C) 1, 2, 3



D) 1, 3

49. Which of the following statements are true?

Britain is the 12th country to join the CPTPP.

The CPTPP was originally called the Trans-Pacific Partnership (TPP) but was renamed after the US withdrew.

The UK's membership in the CPTPP will reduce its annual trade value by £2.5 billion.

- A) 1, 2, and 3
- B) 1 and 3
- C) 2 and 3
- D) 1 and 2

50. Which of the following statements are true?

A) COP29 approved standards for carbon markets, but they are not designed to reduce emissions.

B) Carbon markets allow the buying and selling of carbon credits, which represent a specific amount of CO<sub>2</sub> emissions.

C) Carbon credits are not traded in carbon markets.

D) The carbon credit system has been ineffective in reducing carbon emissions globally.

51. Which of the following statements are true about the committee headed by M. Govinda Rao?

The committee is exploring the use of satellite imagery developed by NIAS.

The committee is solely focused on land development, not economic growth.

A team of statisticians is comparing the findings of the Nanjundappa report with the current economic scenario.

The committee was formed immediately after the Nanjundappa report in the early 2000s.

- A) 1 and 3
- B) 2 and 4
- C) 1, 3, and 4

D) 2 and 3

52. Which of the following statements are true?

Karnataka's Global Capability Centre policy focuses on attracting investments in Bengaluru only.

The state has projected a revenue deficit of ₹27,354 crore for 2024-25.

- A) Only 1
- B) Only 2
- C) Both 1 and 2
- D) Neither 1 nor 2

53. Which of the following statements are true?

SARAT was developed to assist in rescue operations only on land.

SARAT Version 2 has enhanced visualizations and improved search area expansion.

SARAT considers only the time of the last known location, ignoring environmental factors.

The tool supports multiple coastal state languages to assist local fishermen.

- A) 1 and 2
- B) 3 and 4
- C) 2 and 4
- D) 1 and 3

54. Which of the following recommendations for the restructuring of NTA is correct?

The NTA will introduce multi-session testing only for NEET-UG.

The NTA will appoint a Director-General with a rank of Additional Secretary or higher.

The NTA's restructuring plan involves reducing its governance to a single leadership team.

- A) Only Statement 1 is true
- B) Only Statement 2 is true
- C) Only Statement 3 is true
- D) Statements 1 and 2 are true

55. Which of the following statements are true regarding minority rights in India?

The Indian Constitution defines "minority" explicitly.

Article 350 B mandates the appointment of a special officer for linguistic minorities.

The TMA Pai Foundation (2002) judgment established clear criteria for defining minority institutions.

- A) 1 and 2
- B) 2 and 3
- C) 1 and 3
- D) 2 only

56. Which city is highlighted as a hub for entrepreneurship in the Hurun India Top 200 Self-Made Entrepreneurs of the Millennium 2024 list?

- A) Mumbai
- B) Delhi
- C) Bengaluru
- D) Hyderabad

57. How much budget has been allocated by the Karnataka State government for digitizing and preserving original copies of old revenue records?

- A) ₹100 Crore
- B) ₹200 Crore
- C) ₹300 Crore
- D) ₹500 Crore

58. What is the name of the mobile app launched by the Sri Jayadeva Institute of Cardiovascular Sciences and Research to combat sexual harassment and violence against doctors?

- A) Sahayak
- B) Suvidha
- C) SUHRD
- D) Suraksha

59. Which platform links all 17,130 police stations across India for nationwide integration of police operations?

- A) CCTNS
- B) E-Police

- C) P-Track
- D) Crimenet

60. Where is the Gandhi Sagar Wildlife Sanctuary, where Madhya Pradesh aims to create a suitable habitat for cheetahs, located?

- A) Rajasthan
- B) Uttar Pradesh
- C) Madhya Pradesh And Rajasthan
- D) Maharashtra

61. Which of the following statements are true?

Himanshi Indulal Shelat was born in Surat, Gujarat, in 1947.

The selection committee for the award was chaired by Agrahara Krishnamurthy.

The Kuvempu Rashtriya Puraskar includes a cash prize of Rs 5 lakh.

- A) 1 and 3
- B) 2 and 3
- C) 1 and 2
- D) All of the above

62. Which of the following statements are true?

Sacred groves are primarily found in states like Tamil Nadu, Kerala, Karnataka, and Maharashtra.

The Supreme Court has directed the government for Regular monitoring of sacred groves with flexibility for natural growth

The Wildlife (Protection) Act, 1972, will be leveraged to protect sacred groves.

- A) 1 and 2
- B) 1 and 3
- C) 2 and 3
- D) All of the above

63. Which of the following statements are true?

The JNCASR team used gold and silver to create flexible plasmonic devices.

Scandium Nitride (ScN) films are cost-effective and support near-infrared wavelength plasmonics.

Flexible plasmonic devices can only be used in rigid applications.

Traditional plasmonic materials are flexible and inexpensive.

- A) 1 and 4
- B) 2 and 4
- C) 2 and 3
- D) 1 and 2

64. Which of the following statements are true about INS Nirdeshak?

It is the third ship of the Survey Vessel (Large) project.

It is equipped with Multi Beam Echo Sounders and Autonomous Underwater Vehicles (AUV).

It was built by the Indian Navy.

It promotes India's stance on supporting allies without seeking returns.

- A) 1 and 3
- B) 2 and 3
- C) 1 and 4
- D) 2 and 4

65. Which of the following statements are true?

The Sahitya Akademi Award was established in 1965.

The Sahitya Akademi recognizes works in 22 Indian languages, English, and Rajasthani.

- A) Only statement 1 is true
- B) Only statement 2 is true
- C) Both statements are true
- D) Neither statement is true

66. Which of the following statements are true?

A) The Pan Supari Bazaar was a famous marketplace for gold and precious metals during the Vijayanagar period.

B) The excavation of the Pan Supari Bazaar started in 2024.

C) The excavation is taking place in the southern region of Hampi.

D) A 15th-century bronze or copper coin was discovered at the site.

67. Which of the following statements are true?

The twin-tube tunnel roads will cover 46 km at a cost of ₹40,000 crore.

The total cost of the Bengaluru traffic management plan is estimated at ₹30,000 crore.

- A) Only statement 1 is true
- B) Only statement 2 is true
- C) Both statements are true
- D) Neither statement is true

68. Which of the following statements are true?

The new submarine cable systems will connect India to Asia and Africa.

Reliance Jio, with investment from China Mobile, owns the undersea cable systems.

The India Asia Xpress (IAX) connects Chennai and Mumbai with countries like France and Greece.

India is focusing on the Bay of Bengal and South China Sea regions for a stronger maritime cable network presence.

- A) 1 and 2
- B) 2 and 4
- C) 3 and 4
- D) 1 and 3

69. Which of the following statements are true?

Services exports surpassed goods exports for the first time in November 2024.

India's merchandise trade deficit reached a record \$20.84 billion in November 2024.

Gold imports in November 2024 were over three times higher than in November 2023.

The rupee strengthened to 80 against the US dollar in November 2024.

- A) 1 and 4
- B) 2 and 4
- C) 1 and 3
- D) 3 and 4

70. Which of the following statements are true?

The National Institute of Siddha (NIS) set a Guinness World Record by providing Varmam therapy to 567 individuals simultaneously.

Varmam therapy is a core aspect of Western medicine, focused on pain management.

The United States has set a target to reduce its emissions by 61-66% below 2005 levels by 2035.

Siddha medicine originated in North India around 10,000 BC.

- A) 3 and 4
- B) 2 and 4
- C) 1 and 2
- D) 1 and 3

71. Where will the 88th Akhila Bharata Kannada Sahitya Sammelan be held next year?

- A) Bengaluru
- B) Mysuru
- C) Ballari
- D) Hubli

72. India won the inaugural Women's T20 U-19 Asia Cup by defeating which country?

- A) Sri Lanka
- B) Pakistan
- C) Bangladesh
- D) Nepal

73. What is the value of the policy-based loan signed between the Indian government and the Asian Development Bank (ADB) under the SMILE programme?

- A) \$150 million
- B) \$250 million
- C) \$350 million
- D) \$450 million

74. Which new class of medicines has been endorsed by the World Health Organization for managing obesity, diabetes, and cardiovascular diseases?

- A) Beta-blockers
- B) GLP-1 receptor agonists

- C) Statins
- D) Antidiabetics

75. What is the local name of the mysterious illness affecting women and girls in Uganda, characterized by fever and body shaking?

- A) Dinga Dinga
- B) Shivering Fever
- C) Dancing Fever
- D) Jungle Flu

76. Which of the following statements are true?

1. The PSLV-C60 mission will carry 24 PS4-Orbital Experiment Module (POEM-4) payloads.
  2. The RUDRA 1.0 HPGP Payload is developed by SJC Institute of Technology.
  3. The Walking Robotic Arm (RRM-TD) is India's first space robotic manipulator with walking capability.
  4. The GLX-SQ Payload is designed to demonstrate microbiological experiments in space.
- A) 1 and 3
  - B) 2 and 4
  - C) 1 and 2
  - D) 1 and 4

77. Which of the following factors contributed to the reimposition of the Protected Area Regime (PAR)?

Ongoing ethnic violence between the Kuki-Zo and Meitei communities in Manipur. The influx of refugees from Myanmar after the 2021 military coup.

The relaxation of the Protected Area Regime in 2010 was deemed unsuccessful.

- A) 1 and 3 are correct
- B) 1 and 2 are correct
- C) 2 and 3 are correct
- D) All of the above are correct

78. Which of the following is true about the new rules under the amended RTE Act?

- A) Students who fail the re-examination will be expelled from school.
- B) The 'no-detention' policy is mandatory across all states.
- C) Schools are now allowed to fail students in classes 5 and 8.
- D) No re-examination is provided to students who fail in classes 5 or 8.

79. Which of the following statements are true?

1. The ISFR 2023 was released by the Union Minister for Environment, Forest, and Climate Change.
  2. The total forest and tree cover in India is 827,357 sq km, which is 30.17% of India's geographical area.
  3. Chhattisgarh had the largest increase in forest and tree cover at 684 sq km.
  4. India surpassed its 2030 carbon stock target by 2.29 million tonnes.
- A) 1 and 3
  - B) 2 and 4
  - C) 1 and 4
  - D) 3 and 4

80. The Union Minister Shri Bhupender Yadav recently inaugurated advanced wildlife and pashmina certification facilities at the Wildlife Institute of India (WII) in Dehradun. In this regard Which of the following statements are true?

The Pashmina Certification facility ensures fair trade and supports the artisan community in Jammu and Kashmir by enhancing product credibility in global markets.

The Next-Generation Sequencing (NGS) technology at WII is used exclusively for decoding the human genome and does not apply to wildlife conservation.

The Pashmina Certification program is part of India's efforts to promote self-reliance and align with the Atmanirbhar Bharat initiative.

The SEM with EDS in the Pashmina Certification facility only focuses on traditional fiber testing methods.

- A) 1 and 3
- B) 2 and 4
- C) 1, 3, and 4
- D) 2 and 3

81. What is the main objective of NASA's Parker Solar Probe?

- A) To study the Moon's surface
- B) To enhance understanding of the Sun and space-weather forecasting
- C) To explore Jupiter's atmosphere
- D) To observe Earth's magnetic field

82. What is a key feature of KSRTC's new Ambaari Utsav buses?

- A) 60 sleeper berths in a 3x2 configuration
- B) Advanced air conditioning and mobile charging points
- C) Solar-powered engines
- D) High-speed bullet train-like design

83. What is the primary focus of the Youth Co:Lab National Innovation Challenge 2024-2025?

- A) Space exploration
- B) Inclusive solutions for persons with disabilities
- C) Renewable energy solutions
- D) Artificial intelligence development

84. Justice Madan B. Lokur has been appointed as Chairperson of which council?

- A) United Nations Human Rights Council
- B) United Nations Internal Justice Council
- C) International Court of Justice
- D) Supreme Court of India

85. What is bio-bitumen primarily made from?

- A) Crude oil derivatives
- B) Renewable resources like vegetable oils and synthetic polymers
- C) Coal-based hydrocarbons

D) Metallic alloys

86. Who secured the mixed air rifle gold at the 67th National Shooting Championship?

- A) Mairaj Ahmad Khan and Areeba Khan
- B) R. Narmada and Sri Karthik Sabari Raj
- C) Manini Kaushik and Maheshwari Chauhan
- D) Anantjeet Singh and Manini Kaushik

87. Where did Indian weightlifter Martina Devi win a silver medal in the junior plus-87kg category?

- A) Asian Games in Jakarta
- B) World Junior Weightlifting Championships in China
- C) Asian Junior Weightlifting Championships in Doha
- D) Commonwealth Games in Birmingham

88. What is the primary objective of the Anti-Depredation Squads (ADS) introduced in Assam?

- A) To promote tourism in the Pobitora Wildlife Sanctuary
- B) To protect wildlife and prevent human-wildlife conflict
- C) To improve infrastructure in the area
- D) To increase the number of Greater One-Horned Rhinoceroses

89. The Srisailem Temple is dedicated to which Hindu deity?

- A) Lord Vishnu
- B) Lord Shiva
- C) Lord Rama
- D) Goddess Durga

90. Which hydrographic survey ship of the Indian Navy is involved in the Joint Hydrographic Survey with Mauritius?

- A) INS Vikrant
- B) INS Sarvekshak
- C) INS Arihant
- D) INS Rajput

91. Which supersonic missile was successfully fired from the Bayraktar Akinci drone by Turkey?

- A) UAV-121
- B) UAV-122
- C) UAV-123
- D) UAV-120

92. How many personnel are part of the Indian Army contingent for the Joint Military Exercise Surya Kiran in Nepal?

- A) 500
- B) 334
- C) 250
- D) 400

93. Where is India's first Fishing Cat Collaring Project set to take place?

- A) Coringa Wildlife Sanctuary
- B) Sundarbans
- C) Kaziranga National Park
- D) Gir National Park

94. What is the primary goal of the CSIR Jigyasa program?

- A) To foster curiosity and scientific temper among students
- B) To enhance school infrastructure
- C) To promote technology in classrooms
- D) To develop new scientific inventions

95. FELUDA, developed for detecting H. pylori, is a point-of-care diagnostic service for which country?

- A) Pakistan
- B) India
- C) Sri Lanka
- D) Bangladesh

96. The Kaveri engine, cleared for inflight testing, is developed by which organization?

- A) Indian Space Research Organisation (ISRO)
- B) Gas Turbine Research Establishment (GTRE)

C) Defence Research and Development Organisation (DRDO)	10.A
D) Hindustan Aeronautics Limited (HAL)	11.B
	12.C
	13.A
97. What is the fatality rate range for Marburg Virus Disease (MVD)?	14.B
A) 5% to 20%	15.D
B) 10% to 50%	16.B
C) 24% to 88%	17.C
D) 50% to 75%	18.A
	19.A
	20.D
98. How deep below the surface of the Indian Ocean was the active hydrothermal vent discovered during India's Deep Ocean Mission?	21.B
A) 3,000 meters	22.A
B) 4,500 meters	23.C
C) 5,000 meters	24.B
D) 6,000 meters	25.B
	26.A
	27.B
	28.C
	29.D
99. Which country's Congress recently approved the termination of its Golden Visa program?	30.A
A) France	31.B
B) Spain	32.B
C) Portugal	33.D
D) Greece	34.B
	35.A
	36.B
	37.C
100. What is the purpose of the 'Viksit Panchayat Karmayogi' initiative?	38.A
A) To promote urban governance	39.D
B) To enhance the capacity of Panchayati Raj Institutions	40.B
C) To improve road infrastructure	41.B
D) To increase the number of rural schools	42.B
	43.C
	44.C
	45.B
	46.B
ANSWER	47.B
1.B	48.A
2.A	49.D
3.B	50.B
4.C	51.A
5.D	52.B
6.B	53.C
7.A	54.B
8.A	55.D
9.D	56.C

57.C  
58.C  
59.A  
60.C  
61.A  
62.B  
63.C  
64.D  
65.B  
66.A  
67.A  
68.B  
69.C  
70.D  
71.C  
72.C  
73.C  
74.B  
75.A  
76.A  
77.B  
78.C  
79.A

80.A  
81.B  
82.B  
83.B  
84.B  
85.B  
86.B  
87.C  
88.b  
89.b  
90.b  
91.b  
92.b  
93.a  
94.b  
95.b  
96.C  
97.B  
98.B  
99.B  
100.B